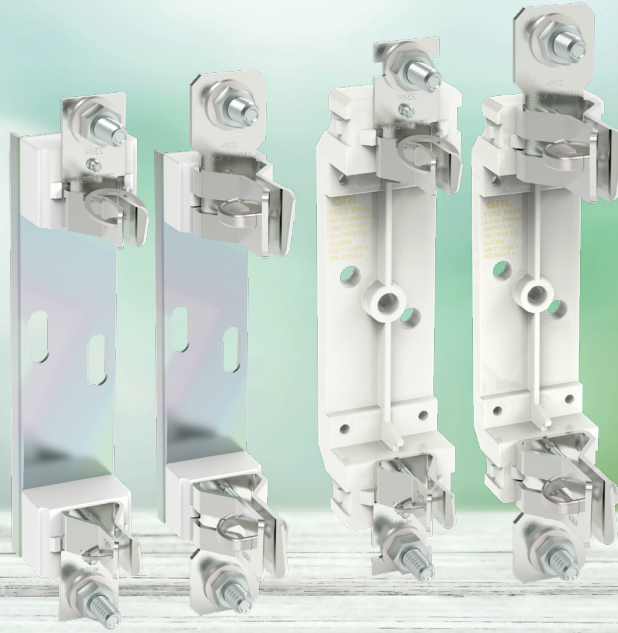


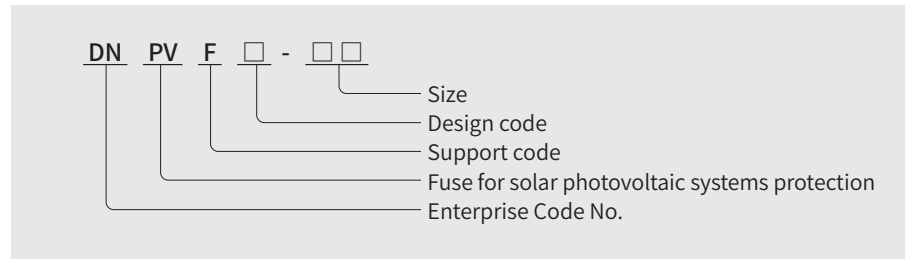
Fuse Base



Product Description

This series of fuses and fuse bases, rated voltage 440V, rated current up to 200A; Used as short-circuit protection for fuses and their complete sets.

Model and meaning



Normal working conditions

1. Ambient air temperature: The ambient air temperature does not exceed 40°C, the average value measured in 24h does not exceed 35°C, and the average value measured in one year is lower than this value. The lowest ambient air temperature is -5°C.
2. Altitude: The altitude of the installation site does not exceed 2000m.
3. Atmospheric conditions: The air is clean, and its relative humidity does not exceed 50% at the highest temperature of 40°C. It can have a higher relative humidity at a lower temperature, for example: at 20°C, the relative humidity can reach 90%. Under these conditions, moderate condensation may occur occasionally due to temperature changes.

Ordering Instructions

When ordering, customers should provide the following information:
DNPVF series fuse base should indicate the form characteristics, fuse applicable size, specification model, installation dimensions and quantity.
For example: DNPVF2-1L 10 pieces

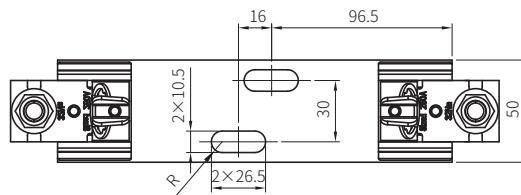
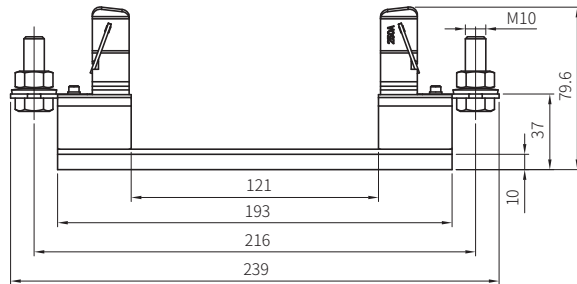
DNPVF2-1L DNPVF2-1XL Fuse Base



DNPVF2-1L

Rated Voltage	1500V DC	
Rated Current	250A	
Mounting screw	M10	
Mounting torque	32N.m	
Reference Standard	GB/T 13539.6	IEC 60269-6
Mounting method	Fixed	

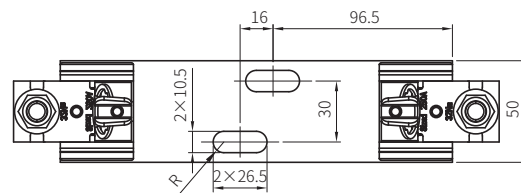
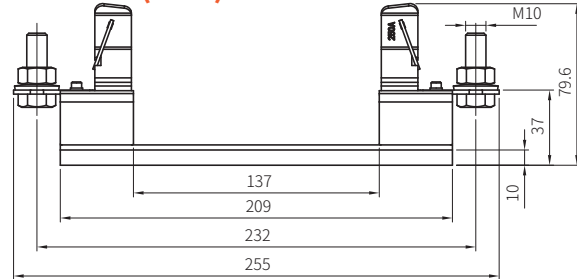
Overall dimensions (mm)



DNPVF2-1XL

Rated Voltage	1500V DC	
Rated Current	250A	
Mounting screw	M10	
Mounting torque	32N.m	
Reference Standard	GB/T 13539.6	IEC 60269-6
Mounting method	Fixed	

Overall dimensions (mm)



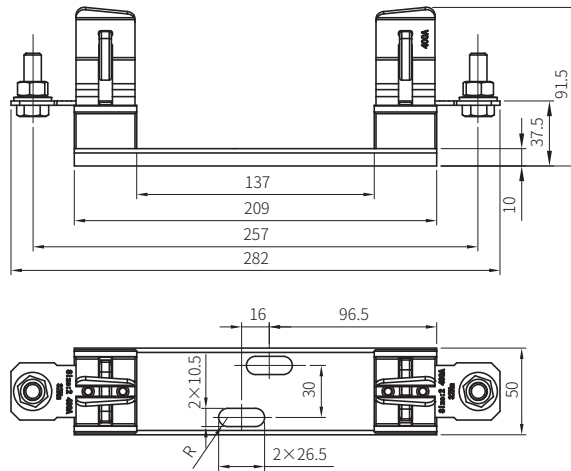
DNPVF2-2XL DNPVF2-3L Fuse Base



DNPVF2-2XL

Rated Voltage	1500V DC
Rated Current	400A
Mounting screw	M12
Mounting torque	32N.m
Reference Standard	GB/T 13539.6 IEC 60269-6
Mounting method	Fixed

Overall dimensions (mm)



DNPVF2-3L

Rated Voltage	1500V DC
Rated Current	630A
Mounting screw	M12
Mounting torque	35N.m
Reference Standard	GB/T 13539.6 IEC 60269-6
Mounting method	Fixed

Overall dimensions (mm)

