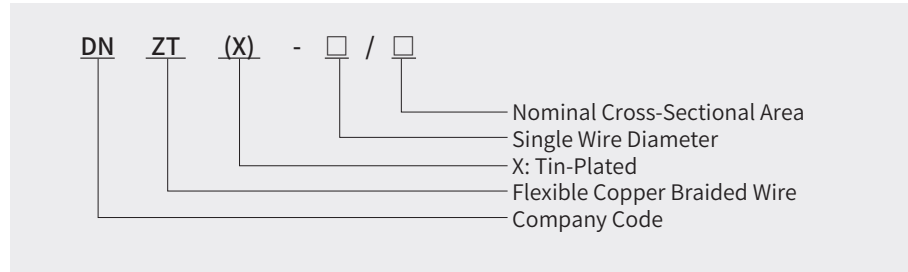


# Flexible Copper Braided Wire



## Model Meaning



## Technical Data

Material	T2 Copper Wire, Copper Content > 99.95%
Single Wire Diameter	0.05mm(American Wire Gauge AWG 44) 0.07mm(American Wire Gauge AWG 41) 0.10mm(American Wire Gauge AWG 38) 0.127mm(American Wire Gauge AWG 36) 0.15mm(Standard) 0.20mm(American Wire Gauge AWG 32)
Surface Treatment	Bare Copper, Tin-Plated, Nickel-Plated, Silver-Plated
Number of Strands	16, 24, 32, 36, 40, 48, 64, 96
Cross-Sectional Area	1mm <sup>2</sup> -300mm <sup>2</sup>
Packaging Method	Packaged in coils, or on spools or wooden reels

## Structure and Application

Flexible copper braided wire can be used in electrical installations, switchgear, electric furnaces, and batteries, serving as a flexible conductor and for flexible grounding.

The flexible copper braided wire is made of T2 copper wire, braided according to the Chinese industry standard JB/T6313.2-2011.

# Flexible Copper Braided Wire

## 1.1.1 Single Wire Diameter: 0.15mm (Standard)

Product Model	Nominal Cross-Sectional Area (mm <sup>2</sup> )	Calculate Cross-Sectional Area (mm <sup>2</sup> )	Wire Structure	Width (Approx. mm)	Thickness (Approx. mm)	Weight (Approx. kg/km)	Maximum Current Capacity (A, Ambient Temperature 35°C)
			Strands × Wires per Strand × Sets / Single Wire Diameter (mm)				
DNTZ(X)-15/1.5	1.5	1.69	24×4×1/0.15	4.0	0.8	15.8	21
DNTZ(X)-15/2	3	2.12	24×5×1/0.15	5.0	0.8	19.6	25
DNTZ(X)-15/2.5	2.5	2.54	24×6×1/0.15	6.0	0.8	23.5	30
DNTZ(X)-15/3	3	2.97	24×7×1/0.15	6.2	1.0	27.4	35
DNTZ(X)-15/4	4	4.24	24×10×1/0.15	7.0	1.2	39.2	40
		3.95	32×7×1/0.15	8.0	1.0	36.5	
		4.52	32×8×1/0.15	8.5	1.0	41.2	
		4.23	48×5×1/0.15	12.0	0.8	39.1	
DNTZ(X)-15/6	6	6.24	32×11×1/0.15	10.0	1.2	57.5	55
		6.36	36×10×1/0.15	11.0	1.2	58.9	
		5.93	48×7×1/0.15	12.0	1.0	54.8	
DNTZ(X)-15/8	8	8.48	32×15×1/0.15	12.0	1.5	78.4	70
		8.45	48×10×1/0.15	15.0	1.2	79.0	
		7.91	64×7×1/0.15	18.0	1.0	73.2	
DNTZ(X)-15/10	10	10.18	24×24×1/0.15	12.5	2.0	95.0	85
		10.7	36×16×1/0.15	14.0	1.5	95.0	
		10.60	40×15×1/0.15	15.0	1.5	98.0	
		10.18	48×12×1/0.15	16.0	1.3	94.0	
DNTZ(X)-15/11	11	11.02	48×13×1/0.15	18.0	1.3	102.0	90
DNTZ(X)-15/12	12	12.72	24×30×1/0.15	14.0	2.0	118.0	95
		12.72	48×15×1/0.15	18.0	1.5	118.0	
		12.43	64×11×1/0.15	22.0	1.3	116.1	
DNTZ(X)-15/16	16	16.96	24×40×1/0.15	16.0	2.2	159.0	120
		16.96	48×20×1/0.15	22.0	1.8	159.0	
DNTZ(X)-15/20	20	21.20	24×50×1/0.15	18.0	2.5	198.0	135
		21.20	48×25×1/0.15	25.0	2.0	198.0	
DNTZ(X)-15/25	25	25.45	24×60×1/0.15	22.0	3.0	238.0	150
		25.45	48×30×1/0.15	28.0	1.8	238.0	
		25.45	48×15×2/0.15	20.0	3.5	238.0	
DNTZ(X)-15/35	35	33.93	24×80×1/0.15	25.0	4.0	317.0	195
		33.93	32×60×1/0.15	28.0	3.0	317.0	
		33.93	64×30×1/0.15	35.0	2.0	317.0	
		33.93	48×20×2/0.15	26.0	3.5	317.0	
DNTZ(X)-15/50	50	50.02	24×118×1/0.15	30.0	6.0	472.0	250
		50.23	36×79×1/0.15	35.0	4.0	473.0	
		50.87	64×45×1/0.15	50.0	2.5	480.0	
		50.87	48×30×2/0.15	30.0	3.5	480.0	
		50.89	48×20×3/0.15	28.0	4.8	483.0	
DNTZ(X)-15/70	70	67.82	64×30×2/0.15	41.0	4.0	633.0	300
DNTZ(X)-15/75	75	75.03	36×118×1/0.15	35.0	6.0	710.0	325
		76.34	48×90×1/0.15	50.0	5.0	725.0	
		75.73	64×67×1/0.15	58.0	3.2	720.0	
		74.88	80×53×1/0.15	55.0	13.5	699.7	
		76.34	48×30×3/0.15	32.0	5.0	726.0	
DNTZ(X)-15/95	95	94.74	36×149×1/0.15	45.0	6.0	885.3	360
		94.95	48×112×1/0.15	55.0	5.0	887.3	
		94.95	64×84×1/0.15	60.0	4.0	887.3	
		94.95	48×28×4/0.15	35.0	6.0	895.7	
DNTZ(X)-15/100	100	99.83	36×157×1/0.15	40.0	6.0	932.8	380
		100.04	48×118×1/0.15	45.0	5.0	934.8	
		100.09	96×59×1/0.15	100.0	2.0	943.7	
		101.74	64×45×2/0.15	50.0	5.0	959.8	
		101.74	64×30×3/0.15	42.0	6.0	959.8	
		101.74	48×30×4/0.15	32.0	7.5	959.8	
DNTZ(X)-15/120	120	126.32	48×149×1/0.15	55.0	6.0	1180.4	420
		120.95	64×107×1/0.15	60.0	4.0	1130.3	
		118.69	96×70×1/0.15	95.0	3.2	1119.7	
		127.17	48×30×5/0.15	37.0	7.0	1199.7	

Note: Customizable according to customer requirements

# Flexible Copper Braided Wire



## Single Wire Diameter:0.05mm(American Wire Gauge AWG44)

Product Model	Nominal Cross-Sectional Area (mm <sup>2</sup> )	Calculate Cross-Sectional Area (mm <sup>2</sup> )	Wire Structure	Width (Approx. mm)	Thickness (Approx. mm)	Weight (Approx. kg/km)	Maximum Current Capacity (A, Ambient Temperature 35°C)
			Strands × Wires per Strand × Sets / Single Wire Diameter (mm)				
DNTZ(X)-05/1	1	0.98	24×21×1/0.05	3.0	0.6	9.1	18
DNTZ(X)-05/1.5	1.5	1.50	24×32×1/0.05	4.0	1.0	14.1	21
DNTZ(X)-05/2.5	2.5	2.54	24×54×1/0.05	6.0	0.8	23.7	30
DNTZ(X)-05/4	4	4.00	24×85×1/0.05	7.0	1.2	37.4	40
DNTZ(X)-05/6	6	6.03	24×128×1/0.05	8.0	1.5	56.3	55
DNTZ(X)-05/10	10	10.03	24×213×1/0.05	12.5	2.0	93.8	85
DNTZ(X)-05/16	16	16.01	24×340×1/0.05	16.0	2.2	149.6	120
DNTZ(X)-05/25	25	24.96	24×530×1/0.05	22.0	3.0	233.2	150
DNTZ(X)-05/35	35	34.99	24×743×1/0.05	25.0	4.0	327.0	195
DNTZ(X)-05/50	50	50.02	32×1062×1/0.05	30.0	6.0	467.4	250
DNTZ(X)-05/75	75	75.03	36×1062×1/0.05	35.0	6.0	701.1	325
DNTZ(X)-05/100	100	100.04	36×1416×1/0.05	45.0	6.0	934.8	380
		100.04	48×1062×1/0.05	55.0	5.0	934.8	

## Single Wire Diameter:0.07mm(American Wire Gauge AWG41)

Product Model	Nominal Cross-Sectional Area (mm <sup>2</sup> )	Calculate Cross-Sectional Area (mm <sup>2</sup> )	Wire Structure	Width (Approx. mm)	Thickness (Approx. mm)	Weight (Approx. kg/km)	Maximum Current Capacity (A, Ambient Temperature 35°C)
			Strands × Wires per Strand × Sets / Single Wire Diameter (mm)				
DNTZ(X)-07/1.5	1.5	1.47	24×16×1/0.07	4.0	1.0	13.8	21
DNTZ(X)-07/2.5	2.5	2.58	24×28×1/0.07	6.0	0.8	24.1	30
DNTZ(X)-07/4	4	4.06	24×44×1/0.07	7.0	1.2	37.9	40
DNTZ(X)-07/6	6	6.00	24×65×1/0.07	8.0	1.5	56.0	55
DNTZ(X)-07/10	10	9.97	24×108×1/0.07	12.5	2.0	93.1	85
DNTZ(X)-07/16	16	16.06	24×174×1/0.07	16.0	2.2	150.1	120
DNTZ(X)-07/25	25	24.92	24×270×1/0.07	22.0	3.0	232.9	150
DNTZ(X)-07/35	35	35.08	24×380×1/0.07	25.0	4.0	327.8	195
DNTZ(X)-07/50	50	49.97	32×406×1/0.07	30.0	6.0	467.0	250
DNTZ(X)-07/75	75	75.05	36×542×1/0.07	35.0	6.0	701.3	325
DNTZ(X)-07/100	100	99.98	36×722×1/0.07	45.0	6.0	934.3	380
		100.07	48×542×1/0.07	55.0	5.0	935.1	

Note: Customizable according to customer requirements

# Flexible Copper Braided Wire



## Single Wire Diameter:0.10mm(American Wire Gauge AWG38)

Product Model	Nominal Cross-Sectional Area (mm <sup>2</sup> )	Calculate Cross-Sectional Area (mm <sup>2</sup> )	Wire Structure	Width (Approx. mm)	Thickness (Approx. mm)	Weight (Approx. kg/km)	Maximum Current Capacity (A, Ambient Temperature 35°C)
			Strands × Wires per Strand × Sets / Single Wire Diameter (mm)				
DNTZ(X)-10/1.5	1.5	1.51	24×8×1/0.10	4.0	1.0	14.0	21
DNTZ(X)-10/2.5	2.5	2.64	24×14×1/0.10	6.0	0.8	24.6	30
DNTZ(X)-10/4	4	4.14	24×22×1/0.10	7.0	1.2	38.7	40
DNTZ(X)-10/6	6	6.02	24×32×1/0.10	8.0	1.5	56.3	55
DNTZ(X)-10/10	10	9.98	24×53×1/0.10	12.5	2.0	93.3	85
DNTZ(X)-10/16	16	16.01	24×85×1/0.10	16.0	2.2	149.6	120
DNTZ(X)10/25	25	25.05	24×133×1/0.10	22.0	3.0	234.1	150
DNTZ(X)-10/35	35	35.04	24×186×1/0.10	25.0	4.0	327.4	195
DNTZ(X)10/50	50	50.24	32×200×1/0.10	30.0	6.0	469.4	
DNTZ(X)-10/75	75	75.17	36×266×1/0.10	35.0	6.0	702.4	325
DNTZ(X)-10/100	100	100.04	36×354×1/0.10	45.0	6.0	934.8	380
		100.22	48×266×1/0.10	55.0	5.0	936.6	

## Single Wire Diameter:0.12mm

Product Model	Nominal Cross-Sectional Area (mm <sup>2</sup> )	Calculate Cross-Sectional Area (mm <sup>2</sup> )	Wire Structure	Width (Approx. mm)	Thickness (Approx. mm)	Weight (Approx. kg/km)	Maximum Current Capacity (A, Ambient Temperature 35°C)
			Strands × Wires per Strand × Sets / Single Wire Diameter (mm)				
DNTZ(X)-12/1.5	1.5	1.63	24×6×1/0.12	4.0	0.8	15.2	21
DNTZ(X)-12/2	2	2.17	24×8×1/0.12	5.0	0.8	20.0	25
DNTZ(X)-12/2.5	2.5	2.71	24×10×1/0.12	6.0	0.8	25.3	30
DNTZ(X)-12/4	4	4.07	24×15×1/0.12	7.0	1.2	38.0	40
DNTZ(X)-12/6	6	5.97	24×22×1/0.12	8.0	1.5	55.7	55
		6.51	64×9×1/0.12	19.0	1.0	60.2	
DNTZ(X)-12/10	10	10.04	24×37×1/0.12	12.5	2.0	93.8	85
DNTZ(X)-12/16	16	16.00	24×59×1/0.12	16.0	2.2	149.5	120
DNTZ(X)12/25	25	24.96	24×92×1/0.12	22.0	3.0	233.2	150
DNTZ(X)-12/35	35	35.00	24×129×1/0.12	25.0	4.0	327.0	195
		34.70	48×32×2/0.12	26.0	4.5	324.2	
DNTZ(X)12/50	50	49.92	32×138×1/0.12	30.0	6.0	466.4	250
DNTZ(X)-12/75	75	75.28	36×185×1/0.12	35.0	6.0	703.5	325
DNTZ(X)-12/100	100	100.11	36×246×1/0.12	45.0	6.0	935.5	380
		100.38	48×185×1/0.12	55.0	5.0	938.0	

Note: Customizable according to customer requirements

# Flexible Copper Braided Wire



## Single Wire Diameter:0.127mm(American Wire Gauge AWG36)

Product Model	Nominal Cross-Sectional Area (mm <sup>2</sup> )	Calculate Cross-Sectional Area (mm <sup>2</sup> )	Wire Structure	Width (Approx. mm)	Thickness (Approx. mm)	Weight (Approx. kg/km)	Maximum Current Capacity (A, Ambient Temperature 35°C)
			Strands × Wires per Strand × Sets / Single Wire Diameter (mm)				
DNTZ(X)-127/0.5	0.5	0.49	13×3×1/0.127	1.4	0.4	4.6	12.5
DNTZ(X)-127/0.6	0.6	0.61	16×3×1/0.127	2.7	0.5	5.6	13.5
DNTZ(X)-127/1	1	0.99	13×6×1/0.127	5.2	0.25	9.2	18
		1.22	16×6×1/0.127	3.8	0.5	11.3	
DNTZ(X)-127/1.5	1.5	1.62	16×8×1/0.127	4.5	0.5	15.1	21
DNTZ(X)-127/2	2	2.13	24×7×1/0.127	5.0	0.8	19.8	25
DNTZ(X)-127/2.5	2.5	2.43	24×8×1/0.127	6.0	0.8	22.7	30
DNTZ(X)-127/3	3	3.04	24×10×1/0.127	6.2	1.0	28.3	34
DNTZ(X)-127/4	4	3.95	24×13×1/0.127	7.0	1.2	36.9	40
DNTZ(X)-127/5	5	4.86	24×16×1/0.127	7.2	1.4	45.4	45
		4.86	48×8×1/0.127	14.0	1.1	45.4	
DNTZ(X)-127/6	6	6.08	24×20×1/0.127	8.0	1.5	56.7	55
		6.08	48×10×1/0.127	15.0	1.3	56.7	
		6.48	64×8×1/0.127	18.0	0.8	59.9	
DNTZ(X)-127/7	7	6.68	48×11×1/0.127	15.0	1.3	62.4	60
DNTZ(X)-127/10	10	10.03	24×33×1/0.127	12.5	2.0	93.7	85
		10.94	48×18×1/0.127	16.0	1.5	102.2	
DNTZ(X)-127/116	16	15.80	24×52×1/0.127	16.0	2.2	147.6	120
DNTZ(X)-127/25	25	24.92	24×82×1/0.127	22.0	3.0	232.8	150
DNTZ(X)-127/35	35	34.95	24×115×1/0.127	25.0	4.0	326.5	195
DNTZ(X)-127/50	50	50.24	32×124×1/0.127	30.0	6.0	469.4	250
DNTZ(X)-127/75	75	75.21	36×165×1/0.127	35.0	6.0	702.8	325
DNTZ(X)-127/100	100	100.28	36×220×1/0.127	45.0	6.0	937.0	380

Note: Customizable according to customer requirements

# Flexible Copper Braided Wire

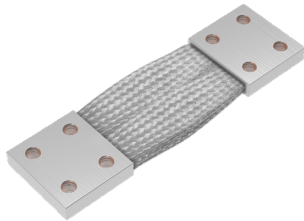


## Single Wire Diameter:0.20mm

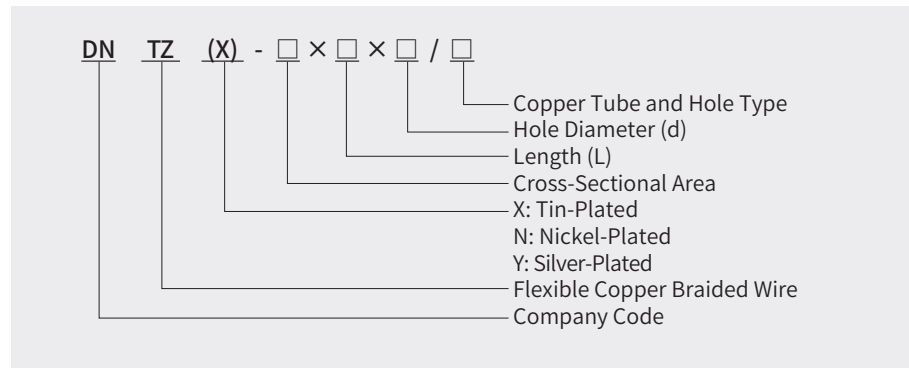
Product Model	Nominal Cross-Sectional Area (mm <sup>2</sup> )	Calculate Cross-Sectional Area (mm <sup>2</sup> )	Wire Structure	Width (Approx. mm)	Thickness (Approx. mm)	Weight (Approx. kg/km)	Maximum Current Capacity (A, Ambient Temperature 35°C)
			Strands × Wires per Strand × Sets / Single Wire Diameter (mm)				
DNTZ(X)-20/0.2	0.2	0.16	13×1×1/0.20	1.4	0.4	1.5	7
DNTZ(X)-20/1.5	1.5	1.51	24×2×1/0.20	3.7	1.0	14.0	21
DNTZ(X)-20/2	2	2.26	24×3×1/0.20	4.8	1.0	21.1	25
DNTZ(X)-20/4	4	3.77	24×5×1/0.20	6.8	1.4	35.2	40
DNTZ(X)-20/5	5	4.52	48×3×1/0.20	11.0	1.0	42.2	45
DNTZ(X)-20/6	6	6.03	48×4×1/0.20	12.0	1.0	56.3	55
DNTZ(X)-20/10	10	10.55	24×14×1/0.20	12.5	2.0	98.5	85
		10.55	48×7×1/0.20	16.0	1.5	98.5	
DNTZ(X)-20/14	14	14.32	24×19×1/0.20	12.5	2.2	133.8	100
DNTZ(X)-20/16	16	15.83	24×21×1/0.20	16.0	2.2	147.8	120
DNTZ(X)-20/25	25	24.88	24×33×1/0.20	22.0	3.0	232.3	150
DNTZ(X)-20/35	35	34.67	24×46×1/0.20	25.0	4.0	323.9	195
DNTZ(X)-20/50	50	50.24	32×50×1/0.20	30.0	6.0	469.4	250
DNTZ(X)-20/75	75	74.60	36×66×1/0.20	35.0	6.0	697.1	325
DNTZ(X)-20/100	100	100.48	40×80×1/0.20	45.0	6.0	938.9	380
		99.48	48×66×1/0.20	55.0	5.0	929.5	

Note: Customizable according to customer requirements

# Copper Braided Wire Flexible Connection (Crimped Copper Tubes at Both Ends)



## Model Meaning



## Technical Data

Material	T2 Copper Wire, Copper Content > 99.95%
Single Wire Diameter	0.05mm(American Wire Gauge AWG44) 0.07mm(American Wire Gauge AWG41) 0.10mm(American Wire Gauge AWG38) 0.127mm(American Wire Gauge AVVG36) 0.15mm(Standard) 0.20mm(American Wire Gauge AWG32)
Surface Treatment	Bare Copper, Tin-Plated, Nickel-Plated, Silver-Plated
Cross-Sectional Area	10mm <sup>2</sup> -6000mm <sup>2</sup>

When placing an order, please specify the following values:

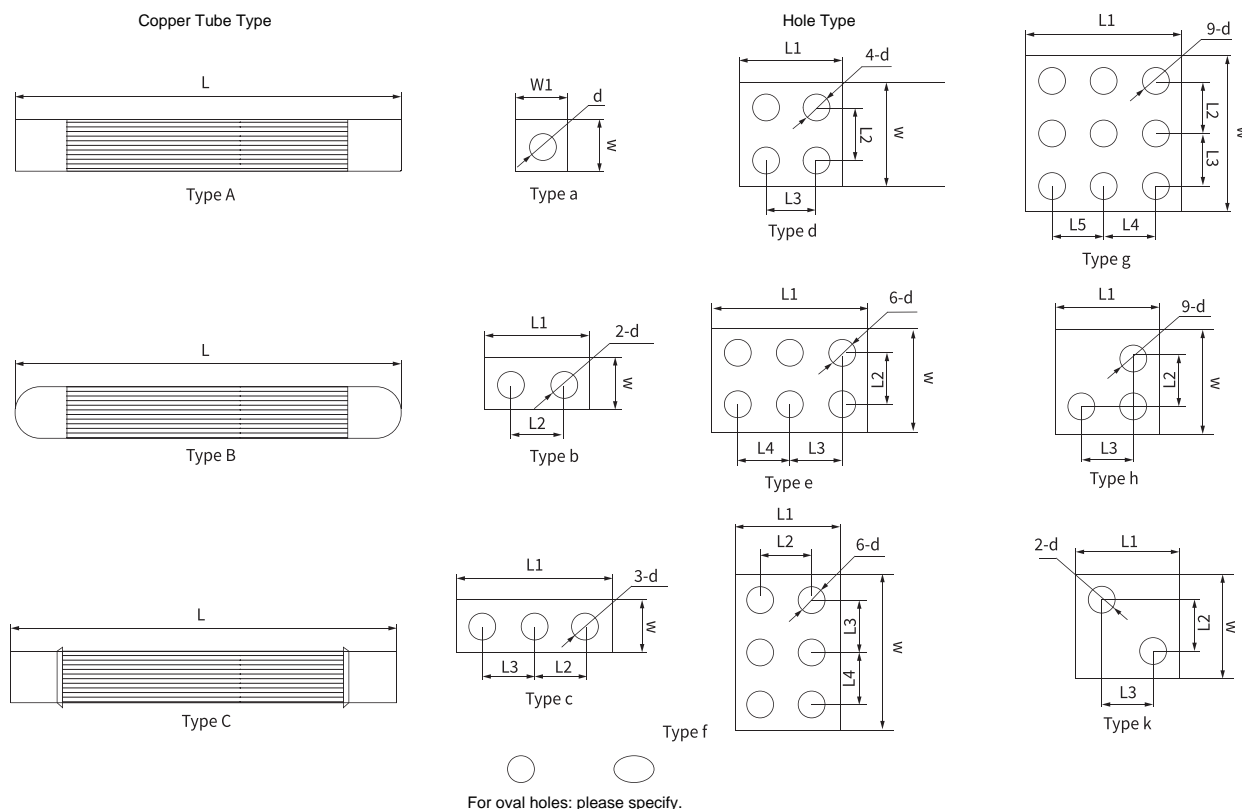
- Cross-Sectional Area
- Length (L)
- Copper Tube and Hole Type
- Hole Diameter (d)
- Single Wire Diameter (Standard 0.15mm)

## Structure and Application

This copper braided wire flexible connection is made with seamless copper tubes crimped at both ends as contact surfaces. Holes can be drilled on the contact surfaces according to customer requirements.

The flexible copper braided wire is made of T2 copper wire, braided according to the Chinese industry standard JBT6313.2-2011.

# Copper Braided Wire Flexible Connection (Crimped Copper Tubes at Both Ends)



**Cross-Sectional Area: 1.5mm<sup>2</sup>-70mm<sup>2</sup>**

Product Model	Cross-Sectional Area (mm <sup>2</sup> )	W/W1 (approx. mm)	Thickness (approx. mm)	L (mm)	d (mm)
DNTZ(X)-1.5/L/d/Aa	1.5	4	1.6	Customized According to Customer Requirements	Customized According to Customer Requirements
DNTZ(X)-2/L/d/Aa	2	5	1.6		
DNTZ(X)-2.5/L/d/Aa	2.5	6	1.6		
DNTZ(X)-4/L/d/Aa	4	7	1.8		
DNTZ(X)-6/L/d/Aa	6	10	1.8		
DNTZ(X)-8/L/d/Aa	8	12	1.8		
DNTZ(X)-10/L/d/Aa	10	15	1.8		
DNTZ(X)-12/L/d/Aa	12	20	1.9		
DNTZ(X)-14/L/d/Aa	14	20	2.1		
DNTZ(X)-16/L/d/Aa	16	19	2.2		
DNTZ(X)-20/L/d/Aa	20	20	2.4		
		25	2.6		
DNTZ(X)-25/L/d/Aa	25	20	2.7		
		25	2.8		
DNTZ(X)-35/L/d/Aa	35	25	3.3		
		20	4.2		
		25	4.0		
		30	4.0		
		40	3.5		
		45	4.0		
		20	7.0		
		25	5.7		
		30	5.5		

Note: Customizable according to customer requirements



# Copper Braided Wire Flexible Connection (Crimped Copper Tubes at Both Ends)



**Cross-Sectional Area: 95mm<sup>2</sup>-200mm<sup>2</sup>**

Product Model	Cross-Sectional Area(mm <sup>2</sup> )	W/W1(approx. mm)	Thickness (approx. mm)	L(mm)	d(mm)
DNTZ(X)-1.5/L/d/Aa	95	40	5.3	Customized According to Customer Requirements	Customized According to Customer Requirements
DNTZ(X)-100/L/d/Aa	100	20	8.5		
		25	7.0		
		30	6.0		
		40	5.4		
		45	5.5		
		50	5.4		
DNTZ(X)-120/L/d/Aa	120	25	8.5		
		30	7.3		
		45	6.3		
		50	5.9		
DNTZ(X)-150/L/d/Aa	150	30	8.6		
		40	6.9		
		45	7.1		
		50	6.6		
DNTZ(X)-185/L/d/Aa	185	30	10.0		
		40	8.0		
		50	7.5		
DNTZ(X)-200/L/d/Aa	200	30	10.6		
		40	8.4		
		50	7.8		
		60	7.0		
		75	6.7		
				6.0	

Note: Customizable according to customer requirements

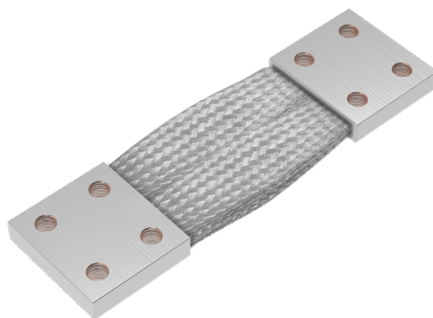
# Copper Braided Wire Flexible Connection (Crimped Copper Tubes at Both Ends)

Cross-Sectional Area: 250mm<sup>2</sup>-600mm<sup>2</sup>

Product Model	Cross-Sectional Area (mm <sup>2</sup> )	W/W1 (approx. mm)	Thickness (approx. mm)	L (mm)	d (mm)
DNTZ(X)-250/L/d/Aa	250	30	12.7	Customized According to Customer Requirements	Customized According to Customer Requirements
		40	10.0		
		45	9.8		
		60	8.0		
		50	9.0		
		75	8.0		
		100	7.0		
DNTZ(X)-300/L/d/Aa	300	30	14.7		
		40	11.5		
		45	11.1		
		50	10.2		
		60	9.0		
		75	8.0		
		80	8.0		
DNTZ(X)-400/L/d/Aa	400	100	7.8		
		40	16.5		
		45	16.0		
		50	13.0		
		75	10.6		
		80	9.5		
		100	10.0		
DNTZ(X)-500/L/d/Aa	500	120	9.0		
		150	9.0		
		40	18.9		
		45	17.0		
		50	15.5		
		60	14.0		
		75	14.0		
		80	13.5		
DNTZ(X)-600/L/d/Aa	600	100	11.2		
		120	10.2		
		150	11.0		
		40	22.0		
		45	19.8		
		50	18.0		
		60	16.5		
		75	15.0		
		80	13.0		
100	12.0				
120	11.5				
		9.5			

Note: Customizable according to customer requirements

# Copper Braided Wire Flexible Connection (Crimped Copper Tubes at Both Ends)



**Cross-Sectional Area: 700mm<sup>2</sup>-1000mm<sup>2</sup>**

Product Model	Cross-Sectional Area(mm <sup>2</sup> )	W/W1(approx. mm)	Thickness (approx. mm)	L(mm)	d(mm)
DNTZ(X)-700/L/d/Aa	700	40	25.3	Customized According to Customer Requirements	Customized According to Customer Requirements
		45	22.6		
		50	20.5		
		75	17.5		
		100	13.5		
		120	13.2		
		150	11.7		
DNTZ(X)-800/L/d/Aa	800	40	28.4		
		45	25.4		
		50	23.0		
		60	20.8		
		75	17.3		
		80	16.4		
		100	14.5		
		120	14.0		
DNTZ(X)-1000L/cAa	1000	60	25.0		
		75	20.5		
		80	20.0		
		100	16.0		
		120	14.5		
		150	13.7		
		200	11.0		

Note: Customizable according to customer requirements

# Copper Braided Wire Flexible Connection (Crimped Copper Tubes at Both Ends)

**Cross-Sectional Area: 1200mm<sup>2</sup>-6000mm<sup>2</sup>**

Product Model	Cross-Sectional Area(mm <sup>2</sup> )	W/W1(approx. mm)	Thickness (approx. mm)	L(mm)	d(mm)
DNTZ(X)-1200/L/d/Aa	1200	75	24.2	Customized According to Customer Requirements	Customized According to Customer Requirements
		80	18.0		
		100	19.8		
		120	19.0		
		150	18.0		
		200	12.0		
DNTZ(X)-1300/L/d/Aa	1300	100	21.1		
		120	19.4		
		150	19.0		
		200	13.0		
DNTZ(X)-1400/L/d/Aa	1400	100	24.0		
		120	21.0		
		150	20.0		
		200	13.5		
DNTZ(X)-1500/L/d/Aa	1500	100	24.5		
		120	22.2		
		150	21.0		
		200	14.0		
DNTZ(X)-1600/L/d/Aa	1600	120	23.5		
		150	22.0		
		200	14.5		
DNTZ(X)-1800/L/d/Aa	1800	120	27.2		
		150	24.0		
		200	16.0		
DNTZ(X)-2000/L/d/Aa	2000	120	31.0		
		150	26.0		
		200	17.5		
DNTZ(X)-2500/L/d/Aa	2500	120	38.5		
		150	35.0		
		200	23.0		
DNTZ(X)-3000/L/d/Aa	2500	120	46.0		
		150	38.5		
		200	24.0		
DNTZ(X)-4000/L/d/Aa	4000	120	60.0		
		150	49.0		
		200	30.0		
DNTZ(X)-4500/L/d/Aa	4500	120	66.0		
		150	54.0		
		200	32.0		
DNTZ(X)-5000/L/d/Aa	5000	120	74.0		
		150	59.0		
		200	35.0		
DNTZ(X)-6000/L/d/Aa	6000	120	86.0		
		150	70.0		
		200	40.0		

Note: Customizable according to customer requirements