

EDSC Series DC Isolator



Scope of application

EDSC series isolation switch is suitable for a power system with rated voltage DC1200V or below and rated current 32A or below. The product can be used for infrequent switching-on and switching-off and can disconnect 1 - 2 MPPT lines at the same time. It is especially suitable for isolating lines in HVDC transmission and distribution systems, such as cutting off the high voltage DC current between solar panels and inverters

Product Benefits

- UV resistance and V0 flame retardant material
- Contact Silver Plating, silver layer thickness up to the industry's highest standards
- Arcing Time in 3 ms
- No Polarity
- Lockable at OFF position

IEC/EN60947.3 standard and AS 60947.3

Provide 5-year warranty product guarantee

EDSC Series DC Isolator

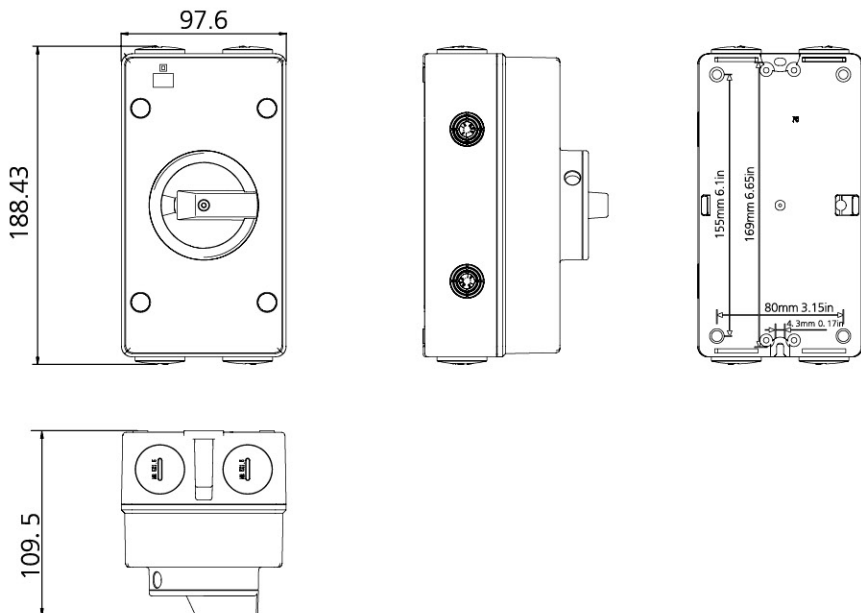
Model and Meaning

E	D	S	C	<input type="checkbox"/>	-	<input type="checkbox"/>	<input type="checkbox"/>	<input type="checkbox"/>	<input type="checkbox"/>
↓	↓	↓	↓	↓	↓	↓	↓	↓	↓
Brand	DC	Isolation Switch	Series	Voltage	Mounting Type	Ith	With lock	Pole	

Technical Parameter

Main Parameters	EDSC		
Rated Insulation Voltage	Ui	V	1500
Rated thermal current	Ith	A	32
Rated impulse withstand voltage	Uimp	V	8000
Rated short-circuit making capacity	Icw	A	1 kA, 1 S
Operation temperature		°C	-40 to +85
Storage temperature		°C	-40 to +85
Pollution degree			3
Overvoltage category			III
IP rating of shafte and mounting nul			IP66

Shape and mounting dimensions



DNHLX-PV2/1 DC Combiner box



Description

DNHLX-PV2/1 DC combiner box is suitable for inverter (MAX input voltage DC550V/DC1000V, 2 PV input channel, 1 output channel, single MPPT inverter). Box body is made of PVC engineering materials, with test for fire retardant, temperature rise, anti impact, anti ultraviolet, and other testing. IP65 protection grade.

Design and configuration, strictly accordance with the "Technical specification for photovoltaic junction equipment" CGC/GF 037:2014. Provide users with a safe, brief, beautiful and applicable photovoltaic system products.

Advantages

● High Reliability

With DC FUSE

With DC Surge Protection Device

With DC circuit breaker or DC load isolation switch

● Strong Adaptability

IP65 design, waterproof, anti dust and anti ultraviolet.

Strict test for high and low temperature, used widely.

The simple installation, the simplified system wiring, the convenient wiring

The box body is made of cold rolled steel and other metal materials

● Flexible configuration

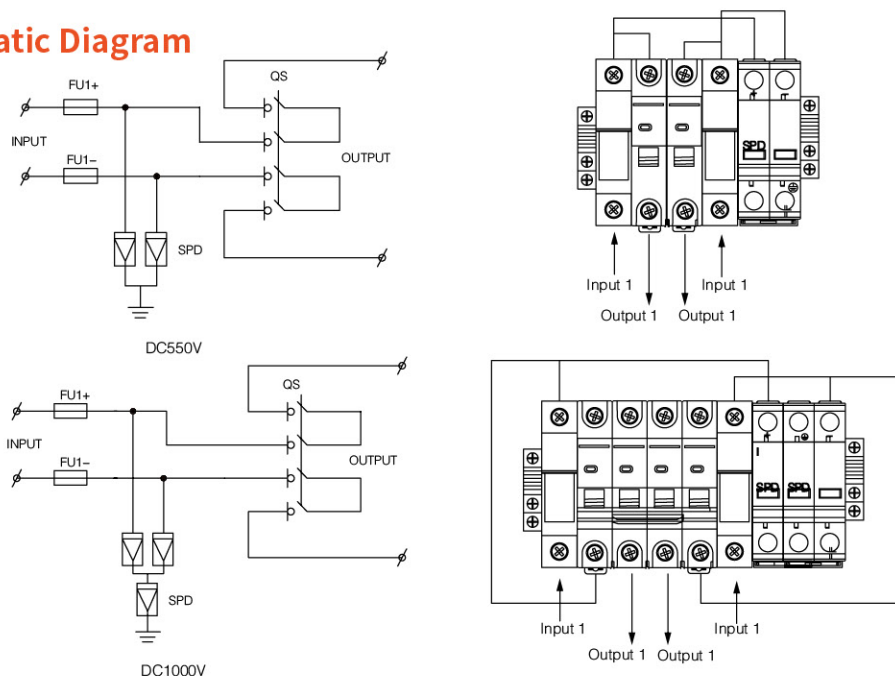
Used for single crystal silicon solar modules, polycrystalline silicon solar modules, thin film solar modules. Current rating of the photovoltaic fuse, circuit breaker, load isolation switch is modified

DNHLX-PV2/1 DC combiner box

Technical Parameter

Model	DHLX-PV2/1	
	Electric parameter	
System maximum dc voltage	550	1000
Maximum input current for each string	15A	
Maximum input strings	2	
Maximum output switch current	20A/32A	
Number of inverter MPPT	1	
Number of Output strings	1	
	Lightning protection	
Category of test	II grade protection	
Nominal discharge current	20kA	
Maximum discharge current	40kA	
Voltage protection level	2.8kV	3.8kV
Maximum continuous operating voltage U _c	630V	1050V
Poles	2P	3P
Structure characteristic	Plug-push module	
	System	
Protection grade	IP65	
Output switch	DC isolation switch (standard)/DC circuit breaker (optional)	
SMC4 Waterproof Connectors	Standard	
PV dc fuse	Standard	
PV surge protector	Standard	
Monitoring module	Optional	
Preventing diode	Optional	
Box material	PVC	
Installation method	Wall mounting type	
Operating Temperature	~25°C ~ +55°C	
Elevation of temperature	2km	
Permissible relative humidity	0-95%, no condensation	
	Mechanical parameter	
Width x High x Depth	300x260x140	

Schematic Diagram



DNHLX-PV12/1 DC Combiner box



Advantages

● High Reliability

With DC FUSE

With DC Surge Protection Device

With DC circuit breaker or DC load isolation switch

● Strong Adaptability

IP65 design, waterproof, anti dust and anti ultraviolet.

Strict test for high and low temperature, used widely.

The simple installation, the simplified system wiring, the convenient wiring

The box body is made of cold rolled steel and other metal materials

● Flexible configuration

Used for single crystal silicon solar modules, polycrystalline silicon solar modules, thin film solar modules. Current rating of the photovoltaic fuse, circuit breaker, load isolation switch is modified

Description

DNHLX-PV12/1 PV combiner box bus synthetic DC input of 12 PV components to 1 output. Each channel is with a fuse. Output side is equipped with lightning protection and circuit breaker. It greatly simplify input wiring of DC power distribution cabinet and inverter. Realize lightning protection, short circuit protection and grounding protection. PV combiner box divided into two types: intelligent box and non-intelligent box. Intelligent PV combiner box is equipped with monitoring unit, then detect input current of each string, detect inside temperature, detect lightning protection status, detect circuit breaker status and summarize output voltage and so on.

Design and configuration strictly accordance with the "Technical specification for photovoltaic junction equipment" CGC/GF 037:2014. Provide users with a safe, brief, beautiful and applicable photovoltaic system products

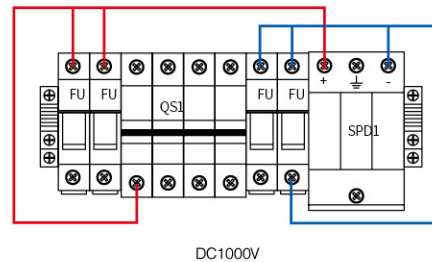
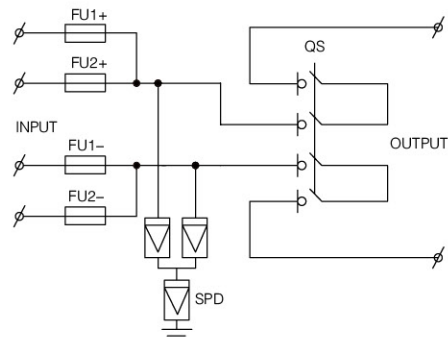
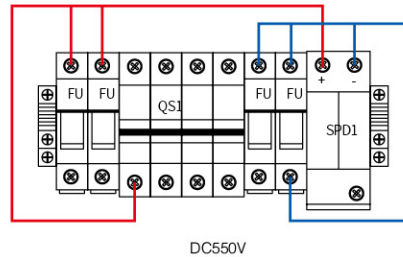
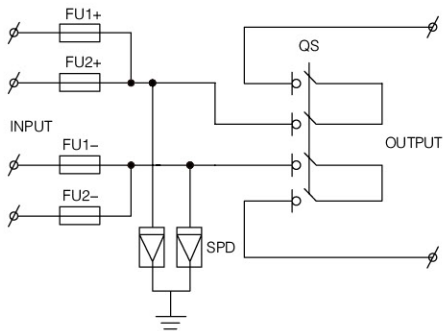
The product adopts outdoor wall mounted type, which adapt to the harsh environment. In addition to the core components, the other can be customized by user requirements

DNHLX-PV12/1 DC combiner box

Technical Parameter

Model	SHLX-PV12/1 Electric parameter
	Electric parameter
System maximum dc voltage	1000
Maximum input current for each string	15A
Maximum input strings	12
Maximum output switch current	160A
Number of inverter MPPT	N
Number of Output strings	1
	Lightning protection
Category of test	II grade protection
Nominal discharge current	20kA
Maximum discharge current	40kA
Voltage protection level	3.8kV
Maximum continuous operating voltage U _c	1050V
Poles	3P
Structure characteristic	Plug-push module
	System
Protection grade	IP65
Output switch	DC isolation switch (standard)/DC circuit breaker (optional)
SMC4 Waterproof Connectors	Standard
PV dc fuse	Standard
PV surge protector	Standard
Monitoring module	Optional
Preventing diode	Optional
Box material	Metal
Installation method	Wall mounting type
Operating Temperature	-25°C ~ +55°C
Elevation of temperature	2km
Permissible relative humidity	0-95%, no condensation

Schematic Diagram



DNHLX-PV8/2 DC Combiner box



Description

DNHLX-PV8/2 DC combiner box is suitable for inverter (MAX input voltage DC1000V, 8 PV input channel, 2 output channel, double MPPT inverter). Box body is made of PVC engineering materials, with test for fire retardant, temperature rise, anti impact, anti ultraviolet, and other testing. IP65 protection grade.

Design and configuration, strictly accordance with the "Technical specification for photovoltaic junction equipment" CGC/GF 037:2014. Provide users with a safe, brief, beautiful and applicable photovoltaic system products.

Advantages

● High Reliability

With DC FUSE
With DC Surge Protection Device
With DC circuit breaker or DC load isolation switch

● Strong Adaptability

IP65 design, waterproof, anti dust and anti ultraviolet. Strict test for high and low temperature, used widely. The simple installation, the simplified system wiring, the convenient wiring
The box body is made of cold rolled steel and other metal materials

● Flexible configuration

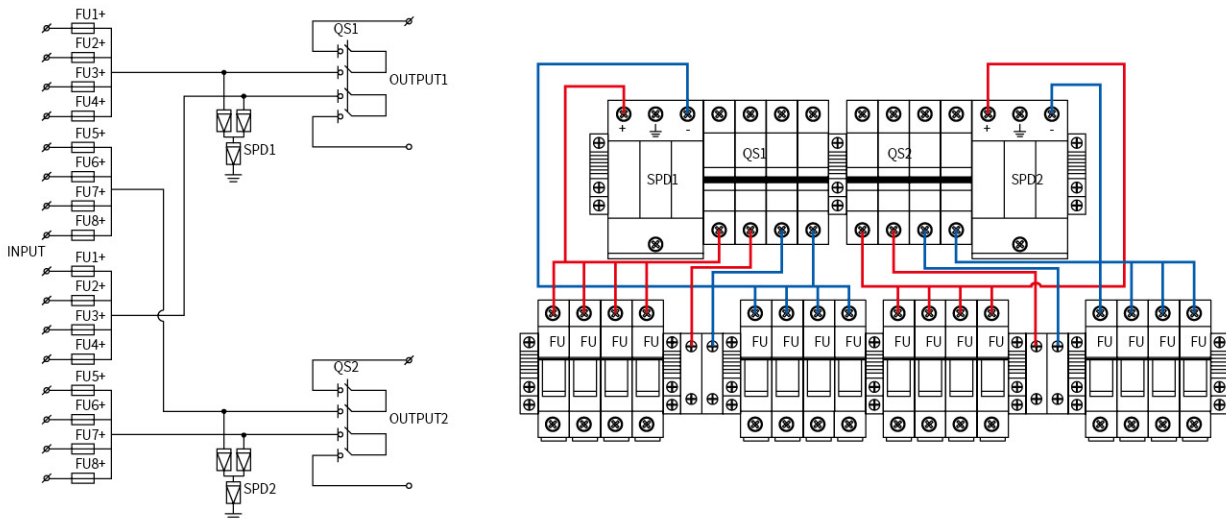
Used for single crystal silicon solar modules, polycrystalline silicon solar modules, thin film solar modules. Current rating of the photovoltaic fuse, circuit breaker, load isolation switch is modified

DNHLX-PV8/2 DC combiner box

Technical Parameter

Model	SHLX-PV12/1	Electric parameter
Electric parameter		
System maximum dc voltage		1000
Maximum input current for each string		15A
Maximum input strings		12
Maximum output switch current		160A
Number of inverter MPPT		N
Number of Output strings		1
Lightning protection		
Category of test		II grade protection
Nominal discharge current		20kA
Maximum discharge current		40kA
Voltage protection level		3.8kV
Maximum continuous operating voltage U _c		1050V
Poles		3P
Structure characteristic		Plug-push module
System		
Protection grade		IP65
Output switch		DC isolation switch (standard)/DC circuit breaker (optional)
SMC4 Waterproof Connectors		Standard
PV dc fuse		Standard
PV surge protector		Standard
Monitoring module		Optional
Preventing diode		Optional
Box material		Metal
Installation method		Wall mounting type
Operating Temperature		-25°C ~ +55°C
Elevation of temperature		2km
Permissible relative humidity		0-95%, no condensation

Schematic Diagram



PV box series



HT series Power Distribution Box

Product description

*Shell material: ABS box body/PC transparent cover

*Waterproof grade: IP65

*Product features: waterproof, dustproof, corrosion-resistant, high-strength insulation

Technical Parameter

Model	Dimensions
HT-5	120*160*95
HT-8	200*155*95
HT-12	250*195*110
HT-15	310*195*110
HT-18	365*195*110
HT-24	360*280*110



HA series Power Distribution Box

Product description

*Shell material: ABS box body/PC transparent cover

*Waterproof grade: IP65

*Product features: waterproof, dustproof, corrosion-resistant, high-strength insulation

Technical Parameter

Model	Dimensions
HA-4	140*210*100
HA-8	215*210*100
HA-12	300*260*140
HA-18	410*285*140
HA-24	415*300*140

PV box series

Snap base business box



Product description

*Shell material: ABS shell/PC transparent cover

*Product features: waterproof, dust-proof, corrosion-resistant, high-strength insulation, holes can be opened at will according to user needs, complete specifications, and convenient installation.

Technical Parameter

Model	Dimensions
KK-1	300*200*170
KK-2	400*300*170
KK-3	500*400*200
KK-4	600*500*220
KK-5	300*200*170
KK-6	400*300*170
KK-7	500*400*200
KK-8	600*500*220
KK-9	300*200*170
KK-10	400*300*170
KK-11	500*400*200
KK-12	600*500*220

TSM Series Lighting box



Product description

*Shell material: PS, ABS, flame retardant material (free choice)

*Waterproof grade: IP40

*Product features: dustproof, convenient installation, strong and durable, beautiful appearance, long service life

Technical Parameter

TSM-4	112*210*100
TSM-6	148*210*100
TSM-8	184*210*100
TSM-10	222*210*100
TSM-12	256*210*100
TSM-15	312*210*100
TSM-18	364*222*100
TSM-24	270*325*100
TSM-36	305*473*100